



BORNO STATE MINISTRY OF HEALTH

TITLE	COVID-19 WEEKLY SITUATION REPORT, EMERGENCY OPERATIONS CENTER, BORNO STATE
EPI WEEK	43
DATE	19 th – 25 th October 2020

Epidemiological summary

- No case was confirmed for the reported week
- Total number of Confirmed Cases as at end of epi-week 43 stands at 747
- Total number of patients discharged for the week – 0
- Cumulative number discharged so far - 709
- No death recorded in week 43
- Total associated deaths – 36 (25 in Isolation facilities and 11 community death.)
- Distribution of confirmed cases by LGA - 130 from Jere, 555 from MMC, 12 from Gwoza, 3 from Damboa, 3 from Bayo, 9 from Biu, 1 from Gubio, 1 from Munguno, 1 from Kaga, 1 from Mobbar, 20 from Konduga, 2 from Nganzai and 2 from Hawul LGAs
- Total number of contacts line listed for follow up – 5,035
- Total initial Samples tested so far in UMTH laboratory stands at 11,602
- Cumulative positivity rate 6.4
- Cumulative samples collected for week 43 were 345
- EOC meets Mondays, Wednesdays and Fridays to review the activities of all the pillars under the leadership of the IM

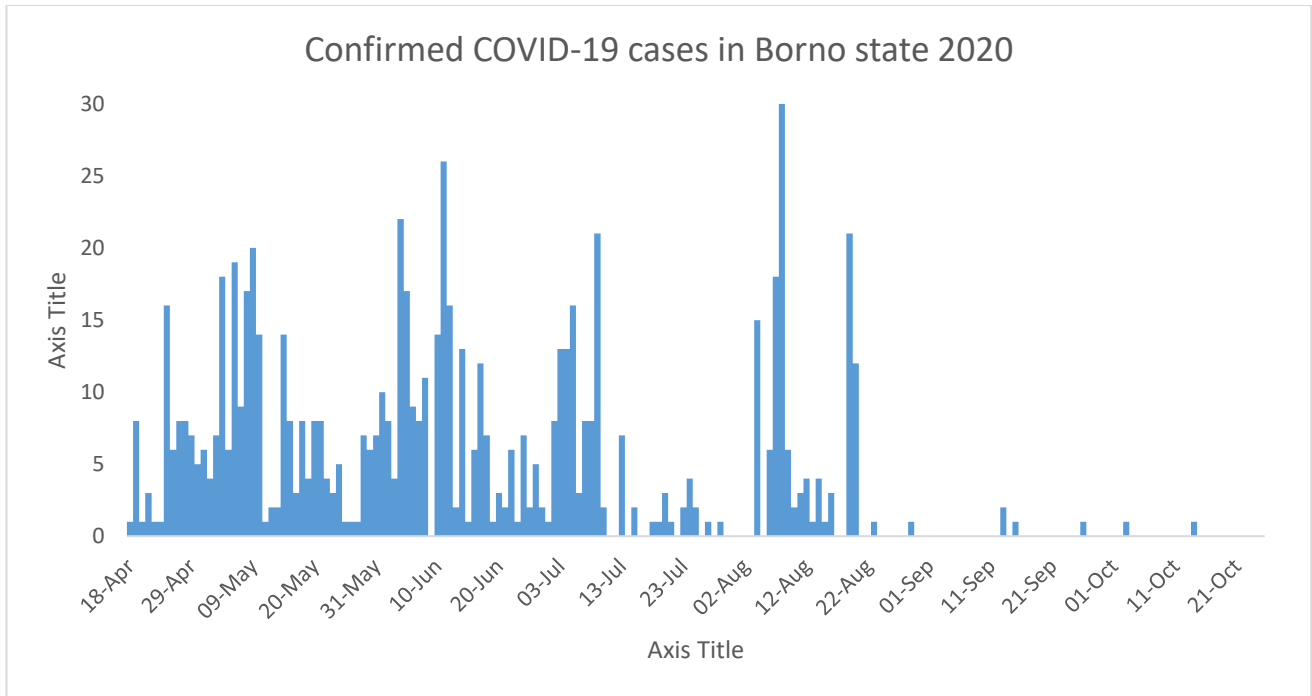


FIG 1: Summary of cases with dates

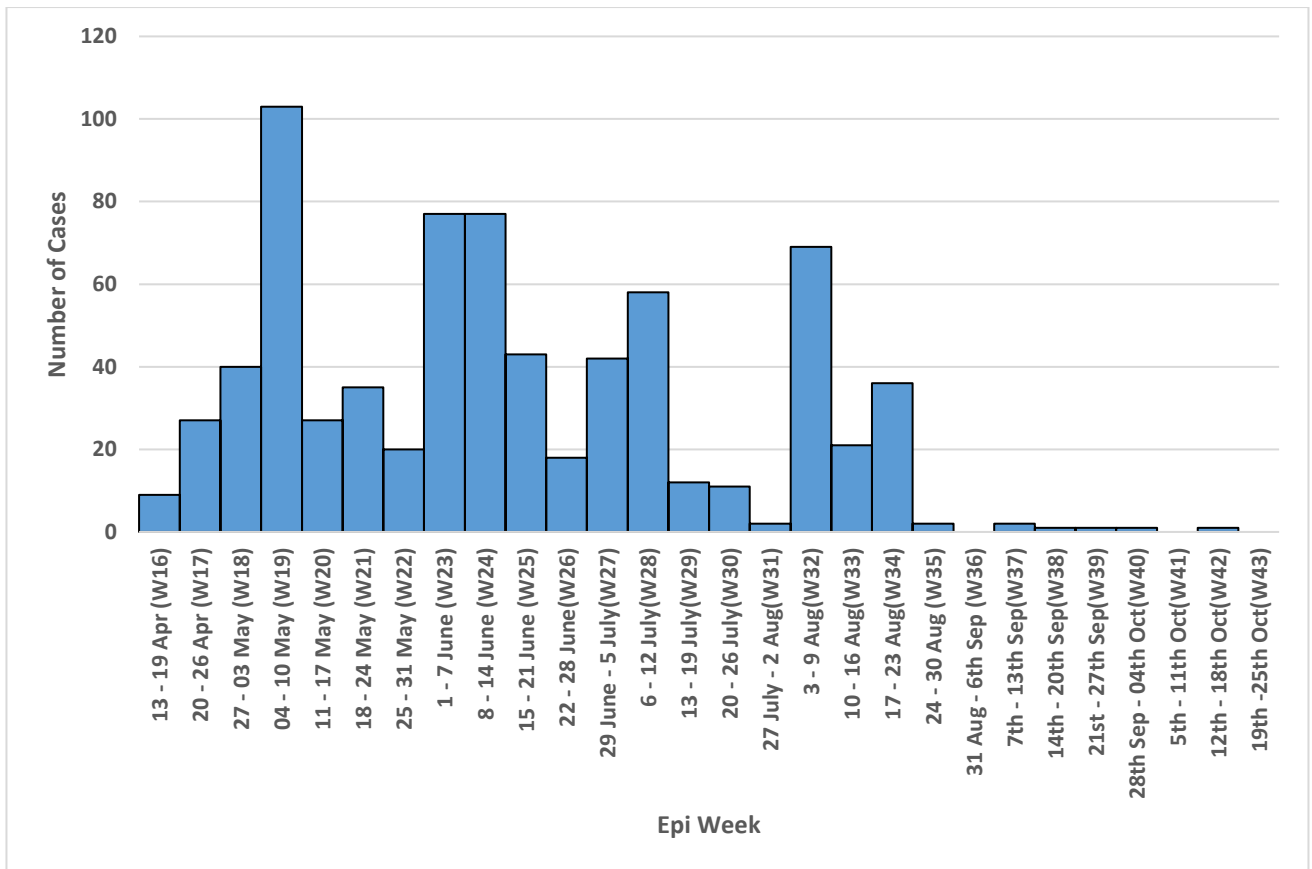


FIG 1b: Weekly Epi-curve of COVID 19 cases in Borno State

TABLE 1: Summary of cases

S/No.	Description	Total for epi-week 43 (Monday-Sunday)	Cumulative (1-Jan to 25 th Oct 2020)
CASES			
1	Suspected cases	8	40
2	Lab-confirmed positive cases	0	747
3	Lab-confirmed positive cases in Health care Worker(s)	0	42
4	Probable cases	0	0
5	Rumour under investigation	0	29
6	Number of confirmed cases on admission	0	709
7	Number of confirmed cases discharged	0	709
8	Number of deaths in confirmed cases	0	36
9	Number of deaths in Health care workers	0	1
10	Number of deaths in suspected cases	0	0

Table 2: Summary of Contacts Follow up

S/No.	Description	Total for epi-week 43 (Monday-Sunday)	Cumulative (1-Jan to 25 th Oct 2020)
1	Contacts listed	5	5,035
2	Contacts seen	5	12,736
3	Contacts currently under follow up	5	12,736
4	Contacts symptomatic	0	30
5	Contacts confirmed positive	0	24
6	Contacts who completed 14 days follow up	0	4,791
7	Contacts lost to follow Up	0	5

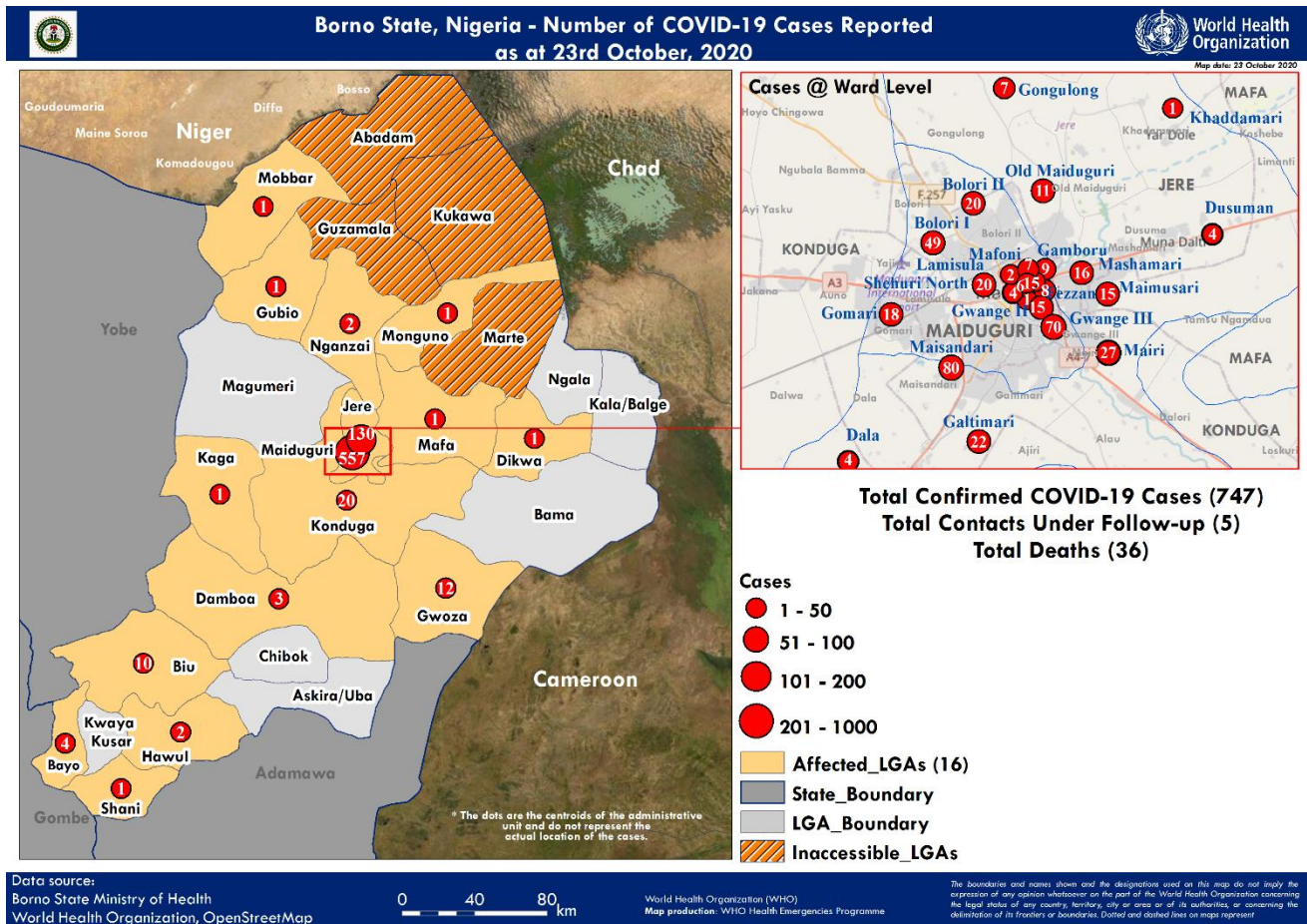


Figure 2. Map of Borno State showing LGA with confirmed cases and contacts under follow up

Table 3: Summary Table Laboratory Test Results

S/No.	Description	Total for epi week 43 (Monday-Sunday)	Cumulative (1-Jan to 25 th Oct 2020)
1	Number of specimens collected	345	11,993
2	Number of pending laboratory samples	0	0

Coordination:

- Daily Coordination meetings held at the Borno State Public Health Emergency Operations with SMOH and Partners.
- Pillar meetings with M&E pillar to review Key Performance Indicators for all pillars
- WHO, UNICEF and other partners supporting the response

Surveillance

- No confirmed case reported for week 44, total confirmed cases stands at 747
- Total contacts being monitored closely – 5
- 8 suspected COVID-19 cases reported by community active case search teams.

Laboratory:

- Cumulative Positivity rate is 6.4 percent
- Test per million of Population: 1,525 Case per million Population: 112
- Total COVID 19 test conducted 10,801 by Borno State
 - Initial test 11,602
 - Follow up test 328

Case Management:

- No case on admission UMTN isolation centres at the end of epi-week 44
- No patient discharged at the end of the week
- Total discharges –709, No death reported for the week
- 1 Patient in self-Isolation.

Infection Prevention and Control:

- Public enlightenment campaign on the use of facemask and hand washing as secondary schools re-opened.

Risk communication/Social mobilization:

- Sensitization of over 25,150 caregivers on COVID-19 continues by UNICEF/WHO in 20 LGAs. Messages focussed on voluntary sample testing, timely reporting of cases, de-stigmatization, hand washing, and use of face mask.

- Jingles on benefit of facemask, handwashing, social distance and de-stigmatization is ongoing in Kanuri, Hausa, Shuwa Arab and Mbura on BRTV, DANDAL KURA and PEACE FM radio station sponsored by UNICEF and CHRISTIAN AID.
- Community sensitization conducted in 20 LGA's by DFID Lafiya project across the state.
- Point of entry activities is continues in LGAs with passengers sensitized on use of facemask, handwashing, social distance and environmental hygiene.

MHPSS:

- WHO's mhGAP response teams provided counselling and sensitization on COVID-19 at health facilities.

Challenges:

- Lack of compliance on the use of face mask by the general public & HCWs.
- No sample collection at Point entry into the state.

Next Step:

- Continue contact tracing and monitoring of already identified contacts
- Continue Community Active Case search/ surveillance
- Public enlightenment campaigns on use of face mask.